

Hawai'i Craftsmen presents...

RAKU Ho'olaule'a 2014

PROSPECTUS

Raku Ho'olaule'a is an annual community Raku ceramics workshop, firing and camp out in a beautiful beach side setting, this year at Camp Mokule'ia.

The Raku Tradition: The ideograph "raku" freely translated means enjoyment, contentment, pleasure and happiness. Originating in 16th century Japan, the first pieces of raku ware were tea bowls. Japanese raku potters worked exclusively to produce vessels for the tea ceremony, creating objects "according to the laws of nature," hence raku evolved as it did because of the tea masters' preferences for natural things.

The Tea Ceremony: Each year Raku Ho'olaule'a is inaugurated with a traditional Japanese tea ceremony presented by the Urasenke Foundation in the **Tea House** of the **University of Hawai'i at Mānoa, East-West Center Garden**. This demonstration is open to all and will take place on **Saturday, May 17, 10 a.m. - 12:00 p.m.**

With a lineage going back 400 years, The Urasenke Foundation was founded in Kyoto, Japan in 1949. Presently it is a worldwide organization dedicated to "Chado, The Way of Tea" and the four Zen principles of Wa, Kei, Sei, and Jaku - Harmony, Respect, Purity and Tranquility. The foundation provides jurors and guidance in the selection of objects for exhibition in the traditional category, as well as participatory tea ceremony demonstrations at our Workshop and exhibition openings, and we are grateful for their continuing participation.

The Tea Bowl Workshop: Following the tea ceremony, Master potter Ed Higa leads a **free, hands-on workshop** where participants shape and carve their own tea bowls. The workshop starts with an introduction to tea ceremony implements and forms intended to explain work that will be eligible for the Traditional category in the exhibition. **Saturday, May 17, from 12:00 - 5:00 p.m.** in the **University of Hawai'i at Mānoa Art Department Ceramics Lab** with a quick *potluck* lunch. *Please RSVP 429-7152 (Ed Higa).*

The Main Event: Raku Ho'olaule'a is focused around three days of communing, glazing and firing artwork by the beach at **Camp Mokule'ia**, from **noon on Friday, May 23, to noon on Monday, May 26**. The public is invited to visit and watch the firings all weekend, and may participate in the Community Kiln on Sunday. Jurying of artwork for the annual exhibition takes place at the beach on Monday morning prior to striking camp.

The Community Kiln: *The public gets to have a turn...* Visitors are invited to come out to Mokule'ia and participate with the artists! Individuals may purchase and glaze a member-created and donated tea bowl, then watch while Hawai'i Craftsmen members fire it right on the spot! Pre-fired bowls will also be available for purchase this year both at camp and at the exhibition. The Community Kiln will be held on **Sunday, May 25, from 12:00 - 4:00 p.m.**

The Exhibition: Selected work from the campout will be on display at **The Arts at Marks, Tuesday, June 3 - Saturday, June 28**, with daily hours from 12:00 - 6:00 p.m. The **Artists' Opening Reception** will be held on **Thursday, June 5, 5:30 - 8:00 p.m.**, and we will have wheel throwing and hand building demonstrations on **First Friday, June 6, from 5:00 - 9:00 p.m.** A Silent Auction runs the duration of the exhibition; Tea Bowls and Sake Cups will also be available for purchase.

The Guest Artist: Hawai'i Craftsmen has invited **Wanda Garrity**, a long time Raku Ho'olaule'a participant living and working in Port Orchard, Washington, to serve as our guest artist/contemporary juror. Wanda's work has been featured in the Lark publication "500 Raku" and she has 21 specially commissioned vessels displayed in the Okura Hotel in Macau. Her extensive range of work can be seen on her website, fireblazepottery.com.

In addition to jurying artwork submitted for exhibition in the Contemporary Raku and Keiki categories, Wanda will be sharing her construction and firing techniques in a **Wet Clay Demonstration on Tuesday, May 20, from 6:00 - 9:00 p.m. at the University of Hawai'i at Mānoa Art Department Ceramics Lab**. There will also be a **Slide Lecture on Wednesday, May 21, from 6:00 - 7:00 pm at the ARTS at Marks (with a Potluck Reception at 5:30 p.m.)**. Wanda will also be demonstrating her techniques and participating at the beachside firings.

Please read this prospectus thoroughly, particularly noting changes in format and fees. A complete calendar of events is included... Have fun!

- All participants, campers, AND guests, must pay certain fees. See Registration Form for specifics.
- Adherence to Camp Rules is mandatory ...*please read and follow attached Camp Mokule'ia Terms.*
- The Community Kiln will be integrated into our group campsites in an 'Open House' style. Each group is asked to offer glazing and/or firing at their site for visiting public.
- *T-Shirts must be pre-ordered and paid for prior to printing* (order forms available at hawaiicraftsmen.org/raku).

• RAKU Ho'olaule'a 2014 • Rules & Regulations •

Registration and Group Participation

Raku Ho'olaule'a is open to the public, however, firing participants and all overnight campers and guests must pay the registration fee as individuals or as part of a group. If you wish to form a group (eight or more), you will need a group leader representative and provide your own equipment and supplies. If you would like to join an already formed group or will be coming from the outer islands; please contact HC at 808-521-3282 or rakuhoolaulea@hawaiicraftsmen.org (note: an equipment rental fee of \$75.00 may be required.)

- Only registered firing participants may fire and enter the juried competition.
- If a collaborative piece is to be considered for the Raku juried exhibit, everyone who participated in making it must have paid the Raku Ho'olaule'a entry fee.
- Hawai'i Craftsmen should receive 25% for all individual sales made at the beach.

There is a \$20 per person fee for families and friends who are just camping. Camp Mokulē'ia mandates a fee of \$5 per person, per day for other non-registered visitors, payable at the front office upon arrival.

Everyone camping and visiting MUST register!

Assigned Camping Areas

Camping space will be available Friday through Monday morning, May 23 -26. Set up may begin on Friday, May 23, from noon. Clean up will be on Monday, May 26, and we must MOVE OUT BY 1:00 p.m. Each group will be assigned a camping area that is adjacent to their assigned firing area. Size and placement of areas is based on size of group. Every effort will be made to accommodate group requests. Please keep your group within your assigned area.

Campsite Firing

Each group will be assigned a firing area. Kilns and pit fire containers must be elevated above the surface to minimize scorching the ground. Reduction barrels/cans must be elevated or placed on kiln shelving/bricks. All reduction material must be disposed of in the dumpster. ***This is a private facility and we must take care to leave it clean to be invited back next year!***

Refundable Security Deposit/Clean Up We are all responsible for the complete clean up of the campgrounds!

A \$75 refundable deposit is required from each group to insure adequate beach and Campsite clean up.

Parking

Overnight parking will be available in designated parking areas only. Obtain car registration form from your group leader and display in window of each vehicle. Parking will be double and triple deep. Outside overflow parking is available on the highway adjacent the camp.

Loading and Unloading

NO vehicles will be allowed in the camping area. Unloading will be allowed from the parking lot and hopefully through a gate at the far end of the grounds. Look for signs; remember to bring carts and handtrucks for transporting gear. PLAN ACCORDINGLY!

Camping Rules

Camp Mokulē'ia has its own rules, some of which are as follows. ***Please read and follow the attached Camp Terms and Conditions.***

- Front Gate opens at 7:00 am, closes at 8:00 pm for Registered Participants.
- Day visitors must check-in at the front office between 9:00 am and 5:00 pm, prior to entering site. There is a \$5.00 fee for day visitors.
- No Alcoholic Beverages. • No Smoking. • No Loud Noise after 10:00 pm. • No Pets Allowed (except for registered Service Animals).
- Do not build fires or cook on the grass. • Keep fires away from trees and tents. • No nails in trees.
- Dispose of wash (and glaze) water in sinks at rest rooms; do not dump in sand or ocean. • Take all trash and bulky trash items to the dumpster throughout the weekend. • Please put your recyclables in the proper Camp Mokulē'ia bins.

Items to bring include:

- Kiln and accessories, reduction materials, cans, tongs, gloves, protective clothing and covered shoes.
- Rope and three six-foot poles to secure tanks (DO NOT bury gas tanks). Enough rope to cordon off kiln/firing area
- Raku glazes, tool kit, shovel, plastic garbage bags, a first-aid kit and sunscreen. • Each group should bring a Group Name banner or sign.
- All groups firing more than one kiln at a time are required to bring a "Y" connector.

Exhibition Participation Requirements

Pre-made bisque pieces made and glazed by the entrant are eligible for entry. Pieces entered for jurying must be fired by the entrant at the Raku Ho'olaule'a 2014 site. Each registered participant must complete an entry form and may enter a total of four pieces, with one of the four entries being for the traditional tea ceremony category (i.e. tea bowl, waste water container, fresh water container, tea caddy, sweets dish, vase, etc.) We are honored to have special guest juror and longtime Chaminade University Professor, Yukio Ozaki, to select work for this. Contemporary works and the Keiki category will be selected by our Guest Artist, Wanda Garrity.

RAKU 2014 T-Shirts will be sold on a preorder basis only. An order form is attached, and additional copies are available via the Hawai'i Craftsmen website at <http://hawaiicraftsmen.org/raku>. **Please return the order form and your payment to Hawai'i Craftsmen by the close of Monday, May 12, to secure your order.**

Mahalo to...

- University of Hawai'i at Mānoa Art Department for generously providing tea bowl workshop and demonstration space.
- The Urasenke Foundation for the Tea Ceremony Demonstrations.
- Ed Higa for organizing and teaching the tea bowl workshop.
- The partners at The ARTS at Marks for hosting the Raku Ho'olaule'a Exhibition, the guest artist lecture, and other events.
- The McInerney Foundation, the State Foundation on Culture and the Arts, Ceramics Hawai'i, and the Timothy Y.C. Choy Fund of the Hawai'i Community Foundation for their generous support.
- Makua Ali'i Senior Center Ceramics Studio for providing monthly meeting space and workspace for our guest artist.
- The many volunteers who have met throughout the year and worked to keep Raku Ho'olaule'a a successful annual event.

The Complete RAKU 2014 Calendar!

*** May 12, Mon.: Deadline for Ordering T-Shirts! * May 21, Wed.: Deadline for RAKU 2014 Registration! ***

Before the Beach...

May 17, Saturday:

Tea Ceremony Demonstration (10am-12pm)
UH-Mānoa East-West Center Garden Tea House
Free Tea Bowl Workshop with Ed Higa (12-5 pm)
UH-Mānoa Art Department Ceramics Lab
This day is Potluck/B.Y.O. Lunch
please RSVP: 808-429-7152 (Ed Higa)

May 20, Tuesday:

Guest Artist's Wet Clay Demo (6-9 pm)
UH-Mānoa Art Department Ceramics Lab

May 21, Wednesday: RAKU 2014 Reg. Deadline!

Guest Artist's Reception & Slide Lecture (6-7 pm)
The ARTS at Marks in Chinatown; *Potluck* (5:30 pm)

Beachside Firing & Camping...

May 23, Friday:

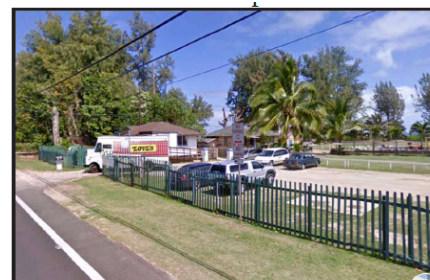
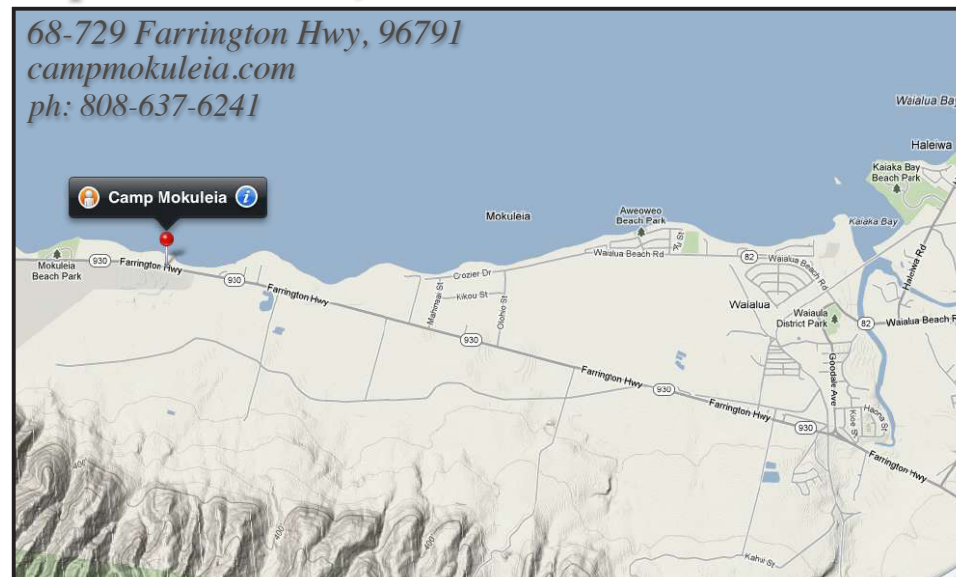
Set-Up Equipment and Campsites (12-6 pm)
Vehicles NOT Allowed on Grass
Let the Firings Begin!
Sunset Blessing (5:30 pm)
Highway Gate locked at 8:00 pm.

May 24, Saturday:

'Infamous Pot Drop' w/Russell Wee (at midnight!)
Highway Gate Open at 7:00 am, Closed at 8:00 pm
Absolutely NO Vehicles Allowed to move equipment or supplies within campgrounds on Saturday.

getting to

Camp Mokulē'ia, Waiālua:



Enter from Farrington Highway, across from Dillingham Field (additional parking on mauka side of highway)

Hawai'i Craftsmen supports Hawai'i artists working in clay, fiber, glass, metal, mixed media, and wood with professional workshops and exhibitions. Our mission is to celebrate fine craft as a vital, enriching part of contemporary life and support the creative growth of our member artists. Hawai'i Craftsmen is a statewide, 501(c)3, member based organization founded in 1966.

Raku Ho'olaule'a is funded by Hawai'i Craftsmen membership dues, entry and camping fees, the community kiln tea bowl and sake cup sales, and other fund-raising efforts, as well as individual donations and grants from the **Hawai'i Community Foundation**, the **McInerney Foundation**, and the **Hawaii State Foundation on Culture and the Arts**. *Thanks for participating!*

visit us at www.hawaiicraftsmen.org

May 25, Sunday:

'Community Kiln' (12:00 am - 4:00 pm)
Highway Gate Open at 7:00 am, Closed at 8:00 pm

May 26, Monday:

ALL FIRING ENDS by 4:00 am
Receive Entries for Jurying (8-10 am)
Jurying of Entries (10:00-11:30 am)
All packing must be completed, cars loaded, and campsites cleaned by Noon!
Jurors' Statement and Awards (12:00-12:30 pm)
...say mahalo and aloha to Camp Mokulē'ia

After the Beach...

The Exhibition at The ARTS at Marks!

June 3-28, Gallery Hours: Tues.-Sat., 12-6 pm
...all events below to be held at The ARTS at Marks

June 1, Sunday, 10:00 am - 12:00 pm*

Drop-off Accepted Works, Sake Cups & Teabowls,
and Prepare Gallery for Installation
(Soft Opening on Tues., June 3)

June 5, Thursday, 5:30 - 8:00 pm:

Artists' Opening Reception (Potluck?)

June 6, Friday: First Friday, Wet Clay Demos (6-9 pm)

June 29, Sunday, 9:00 am - 11:00 pm*

Customer/Artist Pick-Up of Work
and Break-Down of Exhibition

**Participation in set-up/break-down will be expected on these days; failure to help may result in forfeiture of deposit!*

camp rules

CAMP MOKULEIA EPISCOPAL CAMP & CONFERENCE CENTER TERMS & CONDITIONS OF CONTRACT

This document is a contract between the Episcopal Camp & Conference Center at Mokule'ia & the Guest or Guest Representative undersigned. The terms and conditions of this document are binding on parties, their successors and assigns. **No reservation is confirmed until this contract is signed by the Guest or Guest Representative and returned to the address specified or when a deposit is paid.** Any outstanding balance due must be paid within 30 days of your scheduled reservation date.

Cancellation Policy: A processing fee of \$100 will be deducted from any refund. If your group cancels less than 90 days prior to the start of the scheduled reservation date you or your group will be charged for the total fee of the reservation made. If your group cancels 91 to 180 days prior to the start of the scheduled reservation you or your group will be charged 50% of the total fee. A \$50 fee will be charged for returned checks due to insufficient funds. **Insurance:** Camp Mokule'ia does not insure the safety of individuals/groups who stay at the Camp. Visiting groups must provide a Certificate of Insurance showing that the group has a minimum of \$1,000,000 in Commercial Liability, listing Camp Mokule'ia, Inc. as additional insured. Insurance Certificate is due with the signed contract.

These Regulations & Policies are enforced for the safety & protection of our guests & staff to help ensure that everyone has the opportunity to enjoy the Camp Mokule'ia experience.

1. All guests (or the official representative of a group) must check in with the office upon arrival. Check in time is 4:00 pm. For All Accommodation's, however Tent Camping check in is at 12:00pm. Please check in at the office for all reservations. All guests are required to go through a Safety Orientation at check in.
2. Every group must be accompanied and supervised by adults. Please see the required guidelines for number of adults per child ratios on Page 1 of the Rules, Regulations and Information Safety Guideline Packet. Groups are required to: bring their own First Aid Kits, and provide adults who are currently certified in First Aid and CPR trained and are responsible for the health and emergency care of the group.
3. Access to the lodge is limited to guests sleeping and registered as a lodge guest. **Tent camping & Cabin guests** are restricted from accessing the lodge or cabins.
4. You & your group assume all risk associated with your stay at Camp Mokule'ia. The Camp or its staff will not be liable for any claims or damages to persons or property arising from, or connected in any way with, the use of the Camp, its facilities or equipment by you and/or any member of your group. **Speed Limit is 5 M.P.H. must be followed.**
5. Your group is responsible for Emergency Transportation and for supervising your group at all times. Camp Mokule'ia does not provide medical care or emergency transportation services to guests or visitors.
6. You agree to be considerate of other guests. **Quiet hours are 10pm to 7am.** Please bring conflicts or concerns promptly to the camp staff & the problem will be addressed. See Camp office door for Emergency cell & staff contact information.
7. If you have additional day-visitors guests please let office know as there is a fee of \$5 per day guest visitor.
8. Tent Campers & Guest Parking is located by the tent field. Parking in the front parking lot is for lodge and cabins guests only. Additional parking for day guests is Camp parking lot (Mauka side) located just before the airfield. **Ground fires on the beach and campgrounds are prohibited per the Fire Marshall & DLNR. Tent Campers – Do not dump coals in the ground, please use designated fire barrels at Site#3 and Site #5.**
9. **Gambling of any kind, and possession of alcohol, use of tobacco products, firearms, fireworks (including red flares) or illegal drugs, is prohibited on Camp Mokule'ia property.** Camp will exercise the right to search & seize if we suspect any of these.
10. **Cabin furnishings, including bunk bed mattresses, may not be removed or moved outdoors. Fees will be incurred.**
11. **Cooking is prohibited in the cabins, in the lodge, or on the lanais.** If ordering meals from Camp a **Late Meal Fee of \$25 per hour will be added for groups/guests delaying meal time more than 15 minutes after scheduled meal time.** Kitchen closed one hour after meal start time. **Only meals prepared by the Camp may be eaten in the dining hall. Meals may not be eaten in the chapel. Thumb tacks, nail or staples are not to be used on the Dining Hall, Chapel, Lanai or lodge walls.**
12. Lodge and Cabin guests must dispose of **hot charcoals** into the designated bin behind Cabins E & F.
13. **Smoking is prohibited on all Camp property.** Burning of mosquito coils etc. is permissible outdoors away from any structures.
14. Pets or other animals not allowed on Camp. If required for medical reasons, please submit medical certificate before check in.
15. Climbing or jumping off the sea walls or boat ramps are prohibited. Use of the swimming pool is prohibited unless your group has scheduled use through the Camp Office: who will hire a Camp approved, certified and currently licensed lifeguard. Ropes course are off limits for your safety unless your group has hired the Camp for Programs. Closed toed shoes are required on the basketball court. Swimming in the ocean is at your own risk as it a public beach. Camp Mokuleia is not responsible for groups using the ocean, for swimming, kayaking, canoes, or with other floatation devices without a Camp approved, Lifeguard. Renting and using Camp Mokuleia kayaks require hiring a Camp Approved Lifeguard.
16. For the safety of our guests swimming in the bay area - Fishing is allowed only from the exposed reef & toward the tent field. The bay area is reserved for swimming.
17. Violation of camp rules may lead to termination of your stay without a refund.
18. **Check out time is 12:00 pm. Before your group checks out please sweep your cabins, and place all trash in the appropriate receptacles. If linens are rented, please follow procedures given at check in. Please do not remove linens from beds. Any missing linens will result in fees.**
19. Please return all keys to the Camp office at check out. You may drop the keys in the drop box on the office door. There will be a \$25 fee for each key not returned to the Camp office at time of check out.
20. There will be a \$50 per hour fee for excessive cleaning required to remove smoke odors or where excessive cleaning is required.
21. You agree to pay the full cost to replace or repair any facility, equipment or furnishing damaged by you or any member of your group not due to normal wear and tear.

THANK YOU FOR CHOOSING CAMP MOKULE'IA WE APPRECIATE YOUR BUSINESS.

8/2012

NOTE: Your Signature on the Raku Ho'olaule'a 2014 Registration Form constitutes your agreement to abide by this list of Terms and Conditions. Please keep for your reference.

RAKU Ho'olaule'a 2014 · Registration Form

Please mail registration form with payment to: Hawai'i Craftsmen, 1159 Nu'uanu Avenue, Honolulu, HI 96817

Name: _____ Group Name: _____

Address: _____

City: _____ State/Island: _____ Zip Code: _____

Phone (day): _____ Phone (cell): _____ E-mail: _____

Payment information: ☐ Check payable to Hawai'i Craftsmen # _____ or ☐ VISA ☐ MasterCard

Card Number _____ Expiration Date: _____

Card Signature _____ Total Payment Amount: _____

A limited number of accommodations may still be available through the management at Camp Mokulē'ia. Among these, Group Cabins and Tent Cabins are offered. Please contact Camp Mokulē'ia directly at 637-6241, or reservations@campmokuleia.com.

You MUST list all people camping with you at Camp Mokulē'ia that are not registered as firing participants. Day guests must register at the Camp Office.

1. _____
2. _____
3. _____
4. _____
5. _____
6. _____

Participation Agreement

In consideration of Hawai'i Craftsmen's acceptance of this application, the undersigned applicant acknowledges that the applicant's participation in Raku Ho'olaule'a 2014 workshop and exhibition is solely at applicant's own risk and the applicant is solely responsible for all parties listed in this registration under "Camping at Camp Mokulē'ia". The applicant therefore agrees to abide by all event rules and to release, discharge, indemnify and hold harmless Hawai'i Craftsmen, Camp Mokulē'ia, the State Foundation on Culture and the Arts, Makua Ali'i Senior Center, the City and County of Honolulu, the McInerney Foundation, the Urasenke Foundation, the University of Hawai'i, and the ARTS at Marks from any liability that might arise as a result of any injury to applicant's person or property during applicant's participation in Raku Ho'olaule'a 2014 event.

Signature: _____ Date: _____

Legal Guardian, if Minor: _____

mahalo!

Registration Deadline: May 21, 2014

Online Registration available at:
<http://hawaiicraftsmen.org/events>

Fees

Participation: Camping, and/or firing with intention to submit work for judging. If a collaborative piece is to be considered for the Raku juried exhibit, everyone who participated in making it must have paid the Raku Ho'olaule'a 2014 fee.)

Hawai'i Craftsmen Members # _____ @ \$55 = _____

Non-Members # _____ @ \$105 = _____

Students, Full Time w/ID (members) # _____ @ \$35 = _____

(non-members) # _____ @ \$60 = _____

Minors (members) # _____ @ \$25 = _____

(non-members) # _____ @ \$35 = _____

Off-Island Group Equipment Rental Fee # _____ @ \$75 = _____

Camping Only, \$20 per person # _____ @ \$20 = _____

Membership Dues

Individual # _____ @ \$48 = _____

Family (household) # _____ @ \$65 = _____

Student (with valid ID) # _____ @ \$25 = _____

Seniors (65 & older) # _____ @ \$30 = _____

Donation _____

T-Shirt Order Total (see attached form) _____

TOTAL ENCLOSED \$ _____

Please make checks payable to: **Hawai'i Craftsmen**

T-Shirt Order Form • RAKU 2014

All Shirts
\$20.00

(except as noted)

T-shirt design by Rochelle Lum

Colors:



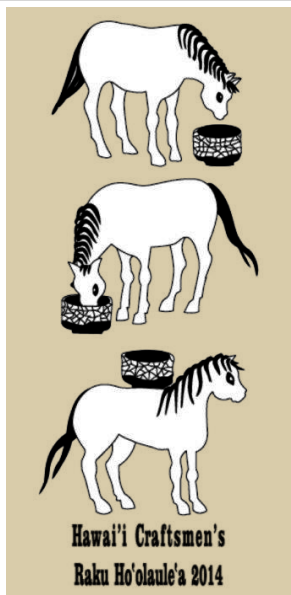
sand



turquoise

Printing provided by Sidney Lynch with Karp Inc.

front:



back:



DEADLINE: Mon. May 12th

STYLE:	Small	Medium	Large	X Large	XX LG. (add \$1.50)
<i>Men's T</i> (Sand)					
<i>Ladies' T</i> (Turquoise)					
<i>Long Sleeve</i> (Sand)					
<i>Tank Top</i> (Sand)					

Please fill in form and send with payment made to HAWAI'I CRAFTSMEN:

email: raku@hawaiicraftsmen.org **mail:** 1159 Nu'uauu Ave., Honolulu, HI, 96817

Name: _____ Group Name: _____

Address: _____

City: _____ State/Island: _____ Zip Code: _____

Phone: _____ E-mail (req'd for order confirmation): _____

Payment information: (T-shirt order may be added to Registration Form total)

☐ VISA ☐ MasterCard or ☐ Check # _____ (payable to Hawai'i Craftsmen)

Card Number: _____ Expiration Date: _____

Card Signature: _____ Total Payment Amount: _____

ORDER MUST BE RECEIVED AT HAWAI'I CRAFTSMEN BY MON., MAY 12, 2014.
PICK-UP WILL BE AT CAMP MOKULE'IA ON FRIDAY, MAY 23.