

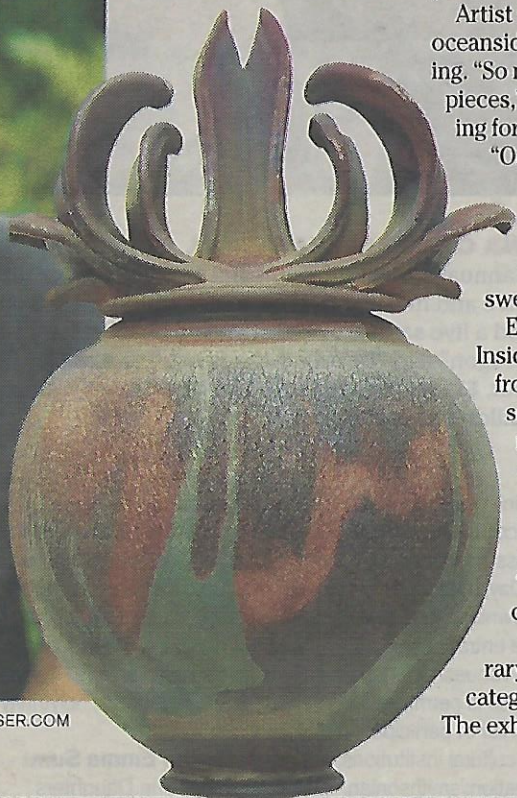


Works of raku wonder emerge from flames

For the full art calendar, visit 808news.com/artweek-calendar



Christopher Edwards holds his piece, "The Inside Out." Below, "Magnificent Iridescence" is a raku vessel by Mark White.



PHOTOS BY CINDY ELLEN RUSSELL / CRUSSELL@STARADVERTISER.COM

By Nancy Arcayna
narcayna@staradvertiser.com

Rochelle Lum's whimsical animals and Sidney Lynch's basket of hearts are among the artwork displayed at the Raku Ho'olaule'a 2017 exhibit.

Thirty-seven potters and ceramic artists participated in the event in May at Camp Mokuieiea, glazing and firing more than 70 pieces on the beach. A juried selection of the works can be viewed at Gallery 'Iolani through Oct. 7.

The exhibit contains both raku and pit-fire clay pieces.

Artist Christopher Edwards describes the oceanside gathering as both fiery and entertaining. "So much love, sweat and tears go into these pieces," said Edwards, who has been participating for three years.

"One of the best things is how much you can learn from the other artists. We are sharing tips and borrowing each other's glazes," he said. "And it's nice to be able to jump in the water when we are all sweaty."

Edwards has two pieces in the show: "The Inside Out," which resembles the Death Star from "Star Wars," and "Basic Life Forms," a set of six pieces that received a contemporary honorable mention and is reminiscent of sea creatures.

Momoe Nakajima is participating for the first time this year. She installed the exhibit and also created a raku piece, "Black Peony," a pot that looks like it could have royal ties.

Shigeru Miyamoto juried the contemporary raku category. Artwork in the traditional category was juried by Marilyn Sochi Naka. The exhibit is sponsored by Hawaii Craftsmen.

2017 RAKU HO'OLAULE'A JURIED EXHIBITION

WHERE:

Gallery 'Iolani, Windward Community College

WHEN:

1-5 p.m. Sundays-Fridays through Oct. 7

COST:

Free

INFO:

521-3282

NOTE:

Hawaii Craftsmen artists also will have a table at the 17th Annual Windward Ho'olaule'a, 10 a.m.-4 p.m. Oct. 7 on the great lawn at Windward Community College. Admission is free. Call 236-9155.